

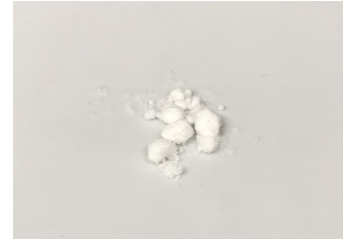
CERTIFICATE OF ANALYSIS No.: 2022-8670

CLIENT

Pharmahemp d.o.o., Cesta v Gorice 8
1000 Ljubljana, Slovenija

SAMPLE *

CBD CRYSTALLINE POWDER



Sample condition: SUITABLE
Sample ID: 2216011
Sample type: Crystal
Batch No.: * CB99022109C

Work order: 2022-106432
Analysis ID: 2022_085
Method ID: PHL_RPC_12C
Method SOP: MET-LAB-003-02

Sample received: 19/04/2022
Start of analysis: 19/04/2022
End of analysis: 20/04/2022
Analyst: Aleksander Jefim

* Information provided by the client.

CANNABINOID PROFILE		Concentration [% w/w]	Expanded uncertainty [% w/w]	Graphic presentation of relative cannabinoid concentration
CBDV	- Cannabidivarin	0.383	0.069	
CBDA	- Cannabidiolic acid	< LOQ	n/a	
CBGA	- Cannabigerolic acid	< LOQ	n/a	
CBG	- Cannabigerol	< LOQ	n/a	
CBD	- Cannabidiol	97.4	4.9	
THCV	- Tetrahydrocannabivarin	< LOQ	n/a	
CBN	- Cannabinol	< LOQ	n/a	
Δ⁹-THC	- Δ-9-Tetrahydrocannabinol	< LOQ	n/a	
Δ⁸-THC	- Δ-8-Tetrahydrocannabinol	< LOQ	n/a	
CBL	- Cannabicyclol	< LOQ	n/a	
CBC	- Cannabichromene	< LOQ	n/a	
Δ⁹-THCA	- Δ-9-Tetrahydrocannabinolic acid	< LOQ	n/a	
CBE	- Cannabielsoin	0.048 #	0.013	
CBNV	- Cannabivarin	< LOQ #	n/a	
CBCA	- Cannabichromenic acid	< LOQ #	n/a	
CBT	- Cannabicitran	< LOQ #	n/a	

Units and abbreviations: % w/w = weight percent, < LOQ = below the limit of quantitation (0.03 % w/w), ND = not detected, n/a = not available.

The results given herein apply only to the sample as received. Expanded Uncertainty was calculated using coverage factor k = 2, corresponding to a double standard uncertainty and characterizes the interval value in which it is possible to expect the real value with a probability of 95%. This is stated according to the ISO/IEC Guide 98-3.

Total or partial reproduction of this document is not allowed without the permit from PharmaHemp d.o.o. The document does not substitute any other legal document.

Date issued:

20/04/2022

Approved by:



mag. Marko Dragan
Analytical Laboratory Manager

Authorized by:



dr. Boštjan Jančar
Chief Technology Officer

End of Certificate